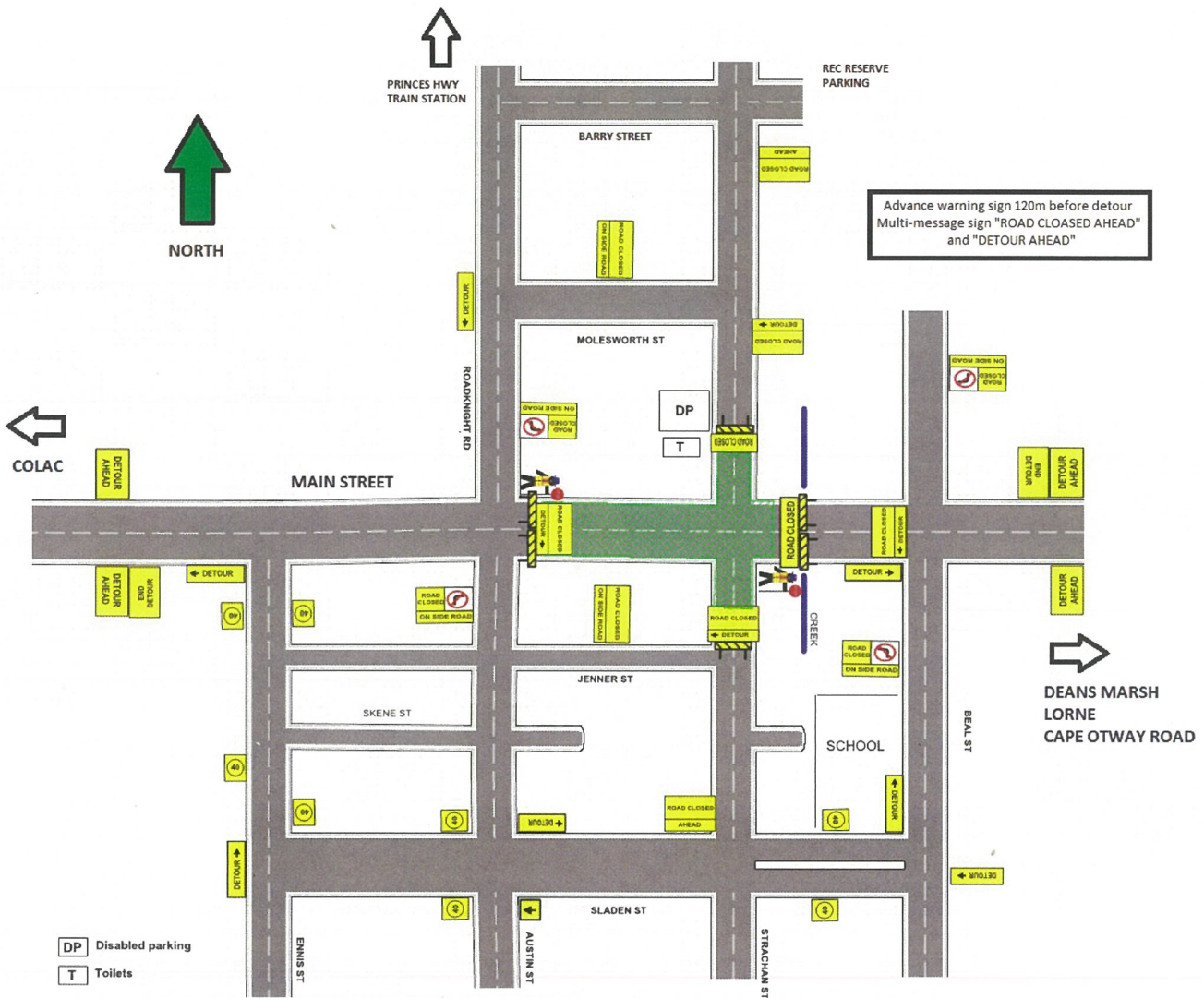


BIRREGURRA WEEKEND FESTIVAL

Traffic Management Plan

Saturday 13th & Sunday 14th October 2018



NOTES:
 An advisory 40km speed limit will be implemented on all gravel roads around the proposed detour route.
 Traffic controllers will man both ends of the closure allowing access / giving directions to vendors, patrons and emergency services vehicles, if required.

Author:	Robert Lidgerwood	Event:	Birregurra Weekend Festival 2018
Closure dates:	13 th & 14 th October 2018	Closure times:	7am – 6pm

Comments:

- All signage and distances are to comply with the Road Management Act and Australia Standards 1742.3 2002. Signs supplied and set out by Birregurra Festival team according to this TMP.
- Accredited Traffic Controllers from the Birregurra Community Group / Birregurra Festival reserve the right to alter this site to suit any unforeseen circumstances or site conditions.
- At any time, one accredited Traffic Controller will be onsite. The TC is a member of a local club, fire brigade, SES, with experience in events and has undergone training in traffic management.
- The Traffic Management Coordinator will be onsite to manage personnel, signage, communications with event organizers, issues throughout the event.
- Road Closure Marshals are local volunteers, briefed and managed by the Traffic Management Coordinator. This TMP is not drawn to scale and is only intended for use as a guide for traffic management purposes.
- Traffic controllers will man both ends of the closure allowing access / giving directions to vendors and emergency service vehicles if required.
- Marshalls to reinforce road closures on Strachan St.
- Dedicated Welcome Marshalls will handle pedestrian enquiries/information.
- Vehicle access within closure only to accredited vehicles.
- Detour will have an advisory speed limit of 40km/h posted throughout.